

ADVANCED INTERACTIVE USER INTERFACE SOLUTIONS

CRYSTALINE INFOTEK PRIVATE LIMITED, A Premier Electronic Design House in India, now brings "ADVANCED INTERACTIVE USER INTERFACE SOLUTIONS" for Embedded Systems, facilitating equipment manufacturers to cater with demanding User Interface Requirements.

Any User Interface on an equipment, appliance or console has two major components, a Display and a Keyboard.

Crystalline Infotek provides UI Solutions using components with advanced technologies –

1. Graphic High Definition LCD displays with Touchscreen
2. Capacitive or Inductive Touch Keypads.

TOUCHSCREEN LCD DISPLAY

Nowadays, many Hand held devices, such as PDA phones, Hand held kiosks, terminals, ECG, etc. are growing in popularity because of their small size and increasing functionality. In fact, many such instruments can perform several measurement functions, such as measuring temperature and pressure. These multi-function measurement instruments typically have several generic keys that apply to all measurement functions.

However, as the number of measurement functions increases, or as the flexibility of these instruments increases, more and more function specific keys must be added to the instrument. As a result, the instrument becomes very cluttered and confusing, especially in determining which key is used for a particular measurement function.

The Touchscreen LCD display can provide a label directly above each multi-purpose key to describe the function for that key. These labels, in turn, can be changed as the functionality of the multi-purpose key is changed. Functional Flow becomes simpler and User friendly. Instrument / appliance become operable even without help of user manual making control very easy to execute.

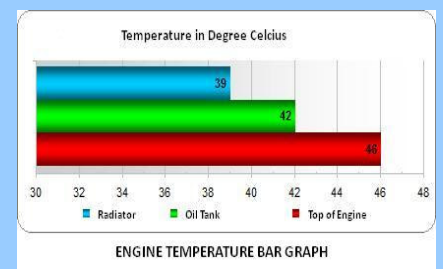
On Touchscreen LCD panel, using our software we can provide advanced functions for customized Graphic User Interactive Screens using readily built different widgets like,

Button, Slider, Window, Check Box, Radio Button, Edit Box, List Box, Group Box, Horizontal/Vertical Scroll Bars, Progress Bar, Static Text, Picture, Dial Meter, Logos, Graph, etc.

TOUCH MENUS



DISPLAY EFFECTS



EQUIPMENT WITH ADVANCED USER INTERFACE

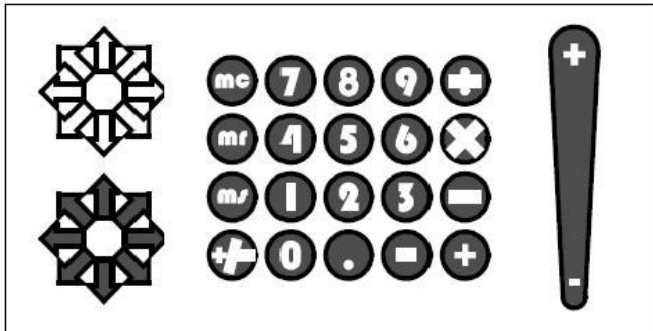


ADVANCED INTERACTIVE USER INTERFACE SOLUTIONS

CRYSTALTOUCH

INDUCTIVE AND CAPACITIVE TOUCH KEYBOARDS

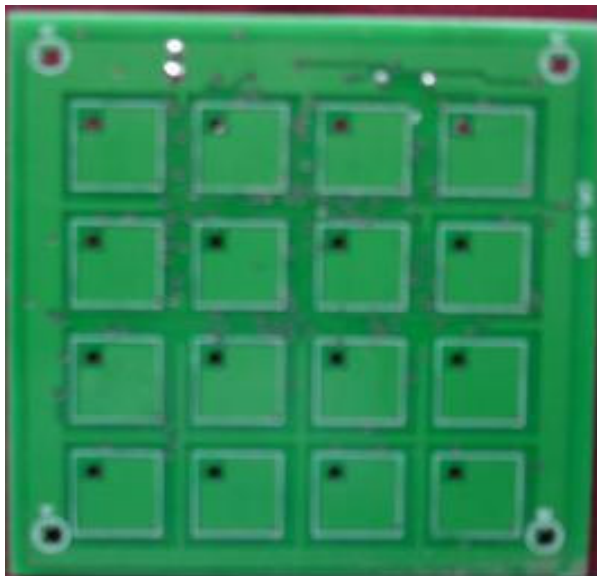
Touch sensing is fast becoming an alternative to traditional push button switch user interfaces, because it requires no mechanical movement and it enables a completely sealed and modern looking design. Expanding beyond the consumer market, touch sensing is beginning to take hold in medical, industrial and automotive applications for reasons such as aesthetics, maintenance cost and cleanliness.



Various Geometries like Round Variator, standard keys, Sliders using CRYSTALTOUCH technology

Beyond normal key geometries, it also, facilitates user with on-board sliders, round variators. With these innovative geometries, we provide manufacturers easy solutions for the demanding User interface requirements.

OUR STANDARD CRYSTALTOUCH KEYPAD



16 Keys CRYSTAL TOUCH Keypad

Specifications:

Size : 90 mm * 90mm
16 Touch Sense Keys with Pre-programmed Sensitivity
Pre-programmable Debouncing Rate
Optional LED's for each Key
Built in BUZZER for key sense indication
One to One Replacement for 4*4 matrix membrane keypad

** Specifications Subject to Change without Notice

STANDARD CRYSTALTOUCH KEYPAD

We have designed a standard 16 Keys **CRYSTALTOUCH** Keypad with 4* 4 matrix. This keypad is designed to replace standard membrane keypads which are used on panel meters. User can stick their own customized fascia with following materials,

1. Polycarbonate,
2. Rear Vinyl Coated Acrylic sheet
3. Glass

This Keypad is a Capacitive Touch keypad and offered as a standard product.

CUSTOMIZED CRYSTALTOUCH SERVICES

A similar Keypad with Inductive Touch Technology is also offered to facilitate users to fabricate a metal fascia using thin steel or aluminum sheet. A curved fascia geometry also can be offered.

We offer also services customers to replace their existing membrane keypads with any number of keys with our CRYSTALTOUCH Keypads without any change in their existing firmware.

These keypads are much rugged and long lasting when compared to conventional membrane keypads.

We also offer communication on RS232, SPI or keys scan & return lines compatible pin to pin to customers' Hardware & firmware.

ADVANCED INTERACTIVE USER INTERFACE SOLUTIONS

MARKET APPLICATIONS

We provide Advanced User Interface solutions to following applications,

Market	Appliances / Equipments	Applications
Home Appliance	Washing Machine	Top Panel Touch Keypad
	Microwave oven,	Front panel Metal fascia User Interface
	Refrigerator control	Touchscreen LCD Console on Front Door
	And many more...	
Home Automation and Lighting	Spa Control,	Programmable activity Selection
	Security System Control	User interface with password key in
	Thermostat Control	Temperature monitor & control
	Universal Remote Control	Master Control for home appliances
	Feather Touch Light switches,	Wired & Wireless ON/OFF control for lights, Dimmers and regulators.
	And many more...	
Industrial	UPS/Power Supply Display	Power parameter display and control.
	Point-of-Sale Terminal	Goods selection and price computation
	Elevator Control	Cabin Keypad and floor keypad
	Test/Measurement	Menu Driven front display (handled or bench top unit)
	Human Machine Interface	On Screen Parameter programming
	Motor Drives	Selection of Parameters like Speed, Time, Travel (if motion control).
	PLC	Process Parameter Programming
Medical	Portable ECG monitors	Cardiogram Graph Display
	Portable Glucose Monitor	Glucose Percentage Display & warning for excessive reading,
	Home Blood Pressure Monitor	Blood Pressure Display & Warning for excessive reading.
	And many more...	
Automotive	Vehicle Dash Board	HVAC Control, Music selection & play, Cabin Temperature Display, Engine Oil & Fuel Level Indication, Speedometer & Engine RPM Display.

DESIGNED, DEVELOPED & MANUFACTURED IN INDIA BY,



Embedding
ideas...

CRYSTALINE INFOTEK PRIVATE LIMITED,
CRYSTAL HOUSE, 235 NAVI PETH, PUNE, MH 411030, INDIA
PHONE +91 20 2 433 9634/35 www.crystalindia.com